

The most innovative PDU on the market



**Intelligent, Rack Mounted,
Power Distribution Unit**

KWX-N3 PDU

KWX-N16A8UK-H4C20

**Remote Monitored PDU &
Outlet Switchable**



- ✓ Monitor The Total Current
- ✓ Monitor Each Outlets Current
- ✓ Hot Swappable Network Card
- ✓ Monitor The Input Voltage
- ✓ Monitor The Total kWh
- ✓ Sequential Power on/off
- ✓ Sequential Boot Up
- ✓ Power Status Holding
- ✓ Power Factor Recognition
- ✓ Monitors Input & Output Voltage
- ✓ 55°C Hot Rack Operating
- ✓ SMS, SNMP & Email Notification
- ✓ 8 x BS1363 Sockets or 20 x BS1363
- ✓ Built In Environmental Monitoring Technology As Standard
- ✓ Infrared Monitoring
- ✓ Temperature & Humidity Alarm
- ✓ Water Logging Alarm
- ✓ Rack Door Open Alarm
- ✓ Smoke Alarm
- ✓ Up to 8 Plug 'n' PlaySensors
- ✓ Blade server Ready
- ✓ DryConnector for Audible Alarms
- ✓ Intelligent Outlet Type & Number Recognition
- ✓ 4,8 &10 Port Horizontal, 20 & Port 0U available, 16A and 32A



KWX-N4

Per Outlte Power Monitoring

KWX-UK POPM(UK Per Outlet Power Metering and Switch) series, combines network power distribution and environmental monitoring technology; it provides real-time remote power consumption of total current load and voltage. Boot up a single or dual power enable server by clicking (On/Off). KWX POPM provides per outlet power monitoring. Power information of individual outlet/port includes current, voltage, power (kW), apparent power and power factor. Receive SNMP-based or email alerts when power or environmental surroundings go above the thresholds. Assign access rights to user groups or individuals. KWX POPM products provide the necessary flexibility, with embedded multithreading inner core RTOS (Real Time Operating Systems), the software supports multitask and multiuser access.

Provides: 8 x BS1363 Sockets and 20 x BS1363 Sockets

Socket Types



Reverse view of KWX-N16A8UK-H3C20

E-mail Alarm	Web Browsing	Protocol	Temperature
Humidity	Water Logging	Smoke Alarm	Infrared Alarm
Door Alarm	RS 485	Dry Connector	19" or Vertical
Current Display	Energy Display	Voltage Display	Each Port on/off

Dimension

19 " Horizontal (W x D x H) = 484 x 206.9 x 44.45 mm

KWX-N32A20UK-V4CB



Items		Description	N1	N2	N3	N4
Monitor Functions	LED Display	Current Load of total pdu and per ports	✓	✓	✓	✓
		LED flashes when overload	✓	✓	✓	✓
		PDU Address, Version Number	✓	✓	✓	✓
	Managing software/Hyper Terminal	Total Current Load	✓	✓	✓	✓
		Monitors Current Load Per Ports	✗	✓	✗	✓
		Input Voltage	✓	✓	✓	✓
		Max. Voltage configured	✓	✓	✓	✓
		Max. Current configured	✓	✓	✓	✓
		Sensors state (optional)	✓	✓	✓	✓
Control Functions	PC Control	On/off of individual unit	✗	✗	✓	✓
		Power On /Off time setting	✗	✗	✓	✓
		Stay the same after restart	✗	✗	✓	✓
Accessing Method	RS 485 port	✓	✓	✓	✓	
Daisy-chain ways	Serial and radiation connection	✓	✓	✓	✓	

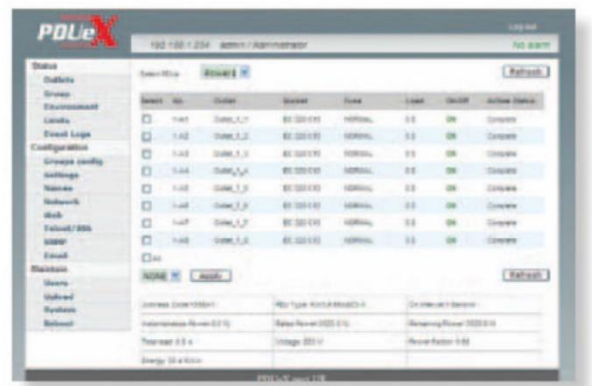
KWX-N16A8UK-H4C20

KWX-UK POPM(UK Per Outlet Power Metering and Switch) series is the new generation of Intelligent PDU. It combines network power distribution and environmental monitoring technology; it provides real-time remote power consumption of total current load and voltage. Assign access rights to user groups or individuals. KWX UK POPM products provide the necessary flexibility, with embedded multithreading inner core RTOS (Real Time Operating Systems), RTOS software supports also various TCP/IP protocols, including HTTP, HTTPS, SSL, SNMP, TELNET, SSH, SMTP etc. Switching, KWX series can be accessed via LAN /WAN or over serial interface. KWX-N series is a remote monitor PDU with embedded multithreading inner core RTOS (Real Time Operating Systems), that supports multitask and multiuser access.

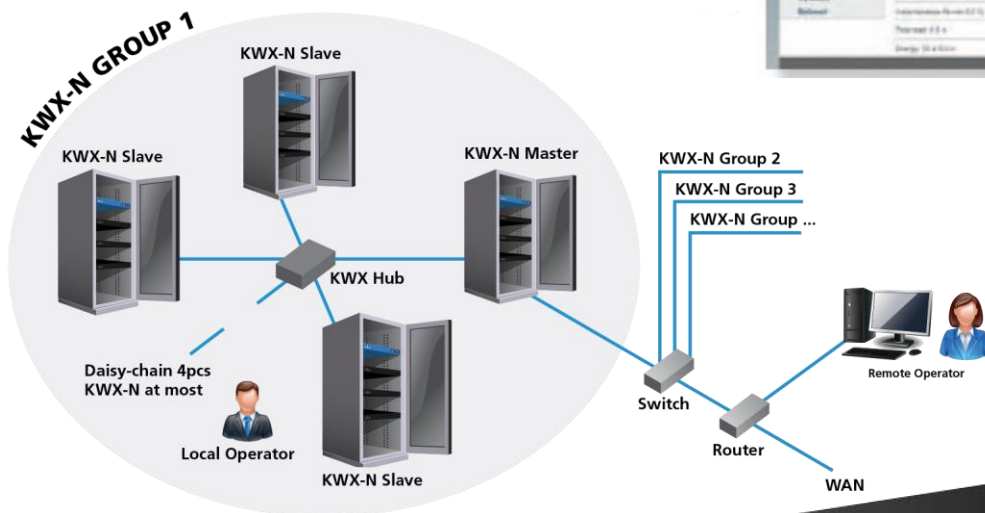
Optional: Temperature and humidity, smoke alarm
Water logging alarm, infrared alarm, and door alarm.

Monitor: Monitor the total current, monitor the total kWh, monitor the input voltage, monitor environment Temperature, monitor environment humidity, monitor environment smoke. Monitor water logging, infrared monitoring, and door open monitoring.

Alarm settings: Total current over the limit, on the temperature limit, on the humidity limit, smoke alarm and water logging alarm, infrared enters alarm, door open alarm, dry connection



Radiation Connection



KWX PDU SENSORS



Infrared Sensor



Door Sensor



**Temperature/
Humidity Sensor**



**Water Logging
Sensor**



Smoke Sensor