

The most innovative PDU on the market



Intelligent, Rack Mounted, Outlets Fused Power Distribution Unit

KWX N3 PDU

Total Power Monitoring & Outlets Switchable PDU



PDUeX as standard where others don't!!

- ✓ Monitor Each Sockets Current
- ✓ Control each outlets on/off
- ✓ Sequential power on/off
- ✓ User can define the sequence of order in which outlets will be switched on.
- ✓ Power Status Holding
- ✓ Monitor the Total Current
- ✓ Monitor the Input Voltage
- ✓ Monitor the total kWh
- ✓ Power Factor Recognition
- ✓ 10 x Individually Fused Sockets
- ✓ Monitors Input & Output Voltage
- ✓ SMS, SNMP & Email Notification
- ✓ C13 IEC Locking as Standard
- ✓ Built in Environmental Monitoring
- ✓ Technology as Standard
- ✓ Up to 8 Sensors, Plug 'n' Play Sensors
- ✓ Bade Server Ready
- ✓ Dry Connector for Audible Alarms
- ✓ Intelligent Outlet Type & Number Recognition
- ✓ 24v and 48v, Single Phase 120v & 240v, 3 Phase 400v



KWX-N16A10C3-H3F □



KWX-N16A20C3-V2F

KWX-N3

Remote Monitored PDU

Total Current Monitoring and Individual Outlets Power Switching, KWX-N16A10C3-H3F, Outlets fused and Switched PDU is the new generation of Intelligent PDU. It combines network power distribution and environmental monitoring technology; it provides real-time remote power consumption of total current load and voltage. Boot up a single or dual power enable server by clicking (On/Off). Receive SNMP-based or email alerts when power or environmental surroundings go above the thresholds. Assign access rights to user groups or individuals. Switched KWX products provide the necessary flexibility, with embedded multithreading inner core RTOS (Real Time Operating Systems), the software supports multitask and multiuser access. RTOS software also supports various TCP/IP protocols, including HTTP, HTTPS, SSL, SNMP, TELNET, SSH, SMTP etc.

Socket Types



Example of the reverse of KWX-N16A8C3

Dimension

19" Horizontal (W x D x H) 19" x 206.9mm x 44.4mm

Vertical mounted (L x W x D) A x 58mm x 44.4mm

A = length can be customized



| Items | Description | N1 | N2 | N3 | N4 | |
|-------------------|----------------------------------|---|----|----|----|---|
| Monitor Functions | LED Display | Current Load of total pdu and per ports | ✓ | ✓ | ✓ | ✓ |
| | | LED flashes when overload | ✓ | ✓ | ✓ | ✓ |
| | | PDU Address, Version Number | ✓ | ✓ | ✓ | ✓ |
| | Managing software/Hyper Terminal | Total Current Load | ✓ | ✓ | ✓ | ✓ |
| | | Monitors Current Load Per Ports | ✗ | ✓ | ✗ | ✓ |
| | | Input Voltage | ✓ | ✓ | ✓ | ✓ |
| | | Max. Voltage configured | ✓ | ✓ | ✓ | ✓ |
| | | Max. Current configured | ✓ | ✓ | ✓ | ✓ |
| | | Sensors state (optional) | ✓ | ✓ | ✓ | ✓ |
| Control Functions | PC Control | On/off of individual unit | ✗ | ✗ | ✓ | ✓ |
| | | Power On /Off time setting | ✗ | ✗ | ✓ | ✓ |
| | | Stay the same after restart | ✗ | ✗ | ✓ | ✓ |
| Accessing Method | RS 485 port | ✓ | ✓ | ✓ | ✓ | |
| Daisy-chain ways | Serial and radiation connection | ✓ | ✓ | ✓ | ✓ | |

KWX-N16A10C3-H3F

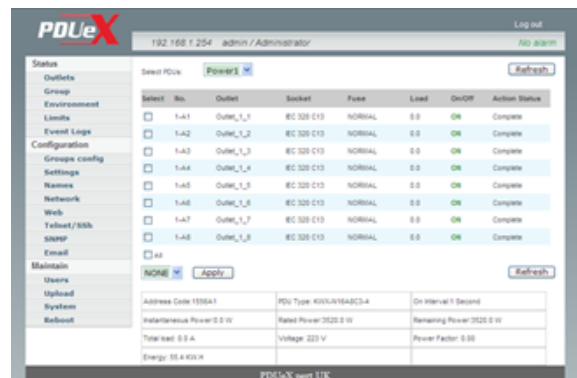
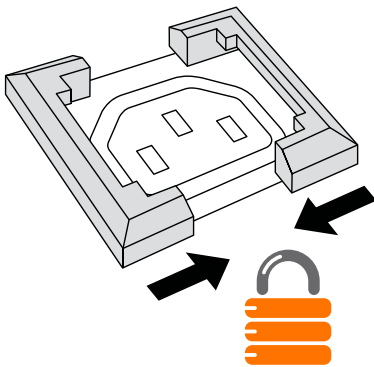
KWX- Outlets fused and Switched PDU provides real-time remote power consumption of total current load and voltage. Total PDU Current Monitoring and Outlet Switching, can be accessed via LAN /WAN or over serial interface.

Provides: Sensors recognition, Ability to cascade up to 4units, Monitor the total current, Monitor the total kWh, and Monitor the input voltage

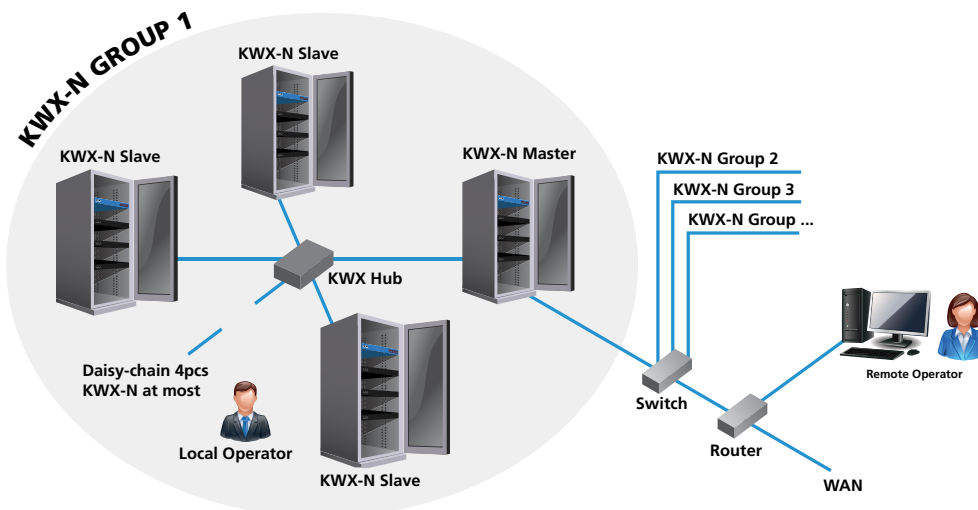
Alarm settings: Total current limit, Temperature limit, Total current over limit alarm, Humidity over limit alarm, Smoke Alarm, Water logging alarm, Infrared enter alarm, Door open alarm, dry connection.

It offers: Monitor Total Power Consumption and individually Switchable Outlets, Power factor recognition, Monitor the input voltage, 10 x individually fused outlets

Optional: Temperature and humidity, Smoke alarm, Water logging alarm, Infrared alarm, Door open alarm.



Radiation Connection



KWX-N16A10C3-H3F

| | |
|-----------------|---------------------------------------|
| Part number | KWX-N16A10C3-H3F |
| Product series | KWX-N series 3 |
| Product Size | W x D x H = 19" x 206.9 mm x 44.45 mm |
| Mounting length | 465 mm |

| | |
|--------------------|-----------------------|
| Case color | Black |
| Net Weight | 3KG |
| Socket type Output | 10 x Lockable IEC-C13 |
| Socket Power Input | IEC-320 C20 16A |

| Function | Illustration | Parameter | Note |
|--------------------------------|----------------------------------|--|--|
| Working voltage | Normal working | AC90~250V | |
| Input/output current | Max input/output current | 16A 10A | |
| Working band | Under normal working | 47~60Hz | |
| Access | Net port | Via WAN or LAN monitor access | 10/100Mb Adaptive Networking |
| | Serial port | Via Serial port monitor access | RS485 port |
| | Sensor port | Sensors access | RS485 port |
| Access way | HTTP/HTTPS | Web browser access | Adapt IE Fire fox inner core browser, support SSL; |
| | TELNET | Simple command lines access | / |
| | SSH | Encryption command lines access | Support SSHV2 version |
| | SNMP | Support SNMP for centralized monitor | Adapt SNMP v1, V2 |
| Operation system compatibility | Support various operation system | Windows/winsta/win7/linux etc. | |
| Secondary development | Used for system integrate | Opening protocol TELNET SSH | |
| | RS485 | Customized protocol | |
| Software upgrade | Manage software load | Support manage software upgrade | |
| | Software on circuit | Support software upgrade on the circuit of hardware | |
| Alarm limit settings | Total current limit | | |
| | Temperature limit | Auto identify limit rationality | |
| | Humidity limit | | |
| Display, Indicate | Outlets indicators | Each outlets with a indicator | Optional |
| | 6 digital indicators | Nixie tube show the current/voltage, inquiry products information, Alarm information; | |
| Menu button operation | Inquiry information | Inquiry product information, Alarm information, current etc. | |
| | On/off Alarm sound, Dry connect | Close/ open alarm sound and dry connect output, Dry connect have normal open/off two choice, passive, touch spot can connect 2A 250VAC | |
| Management | User right limit | Administrator, Normal user | |
| | Outlets grouping | Make group over PDU self sockets limit | |
| | clock synchronization | Regulate PDU system clock | |
| Log record | Alarm log | Alarm log circle, Inquiry, export, stock, delete available | |

| | | | |
|--------------------------------|---|--|----------|
| Control | Control each outlets on/off | Each outlet breaking capacity 16A 250VAC | Optional |
| | Sequential power on/off | The interval of sequential power off time: 0.5s, Sequential power on 1~250s, user-defined | |
| | Power status holding | When PDU restart power, Each outlets will remain the status before | |
| Monitor | Manage software load | Support manage software upgrade | |
| | Monitor the input voltage | Resolution:1V Accuracy: $\pm 1\%+1$ digit Meter range: 90~350V | |
| | Monitor the total current | Resolution: 0.1A Accuracy: $\pm 1\%+1$ digit Meter range: 0.1~40A | |
| | Monitor the total kWh | Resolution: 0.1KW-H Accuracy: 1 grade | |
| | Monitor Environment Temperature | Resolution: 1 Accuracy: $\pm 1\%+1$ digit Meter range: -30~100 | Optional |
| | Monitor Environment Humidity | Resolution: 1% Accuracy: $\pm 1\%+1$ digit Meter range: 01~99% | Optional |
| | Monitor Environment Smoke | Max: 25 m ² available | Optional |
| | Monitor water logging | Water logging or drop monitor | Optional |
| | Infrared monitoring | The max monitor distance: 16m | Optional |
| | Door open monitor | Min. 5mm open distance available | Optional |
| | Surge protection failure monitor | PDU still normal working when failure | Optional |
| Outlets alarm settings | Each fuse failure alarm | | Optional |
| | Total current over limit alarm | PS/PN series local alarm ways: PDU buzzer alarm, sound and light alarm, Dry connect; PN series remote alarm: E-mail, SMS, SNMP TRAP, WEB page notice, TELNET/SSH notice | |
| | Temperature over limit alarm | | Optional |
| | Humidity over limit alarm | | Optional |
| | Smoke Alarm | | Optional |
| | Water logging alarm | | Optional |
| | Infrared enter alarm | | Optional |
| | Door open alarm | KWX-N series remote alarm: E-mail, SMS, SNMP TRAP, WEB page notice, | Optional |
| Surge protection failure alarm | Optional | | |
| Protection | Surge protection | Difference mode: $\pm 2kV$ Common mode $\pm 2kV$ flux: 3KA The max discharge current: 5KA | Optional |
| | Each way with fuse | Breaking capacity : 1500A; Protect main line break, facility, power line suffering, Fuse range: 0.1~16A | Optional |
| | Circuit Breaker protection | Breaking capacity : 6000A | Optional |
| | Recoverable overload protector | Overload protection | Optional |
| Intelligent recognition | Outlets recognition | Automatic read the sockets type and numbers | |
| | Sensors recognition | Sensors port no need be defined, Automatic read the sensors type and numbers | |
| | Limit recognition | When over limit, setting failure | |
| | The MAX output current and PDU power | Help user to limit facilities connect number and type | |
| | Power factor recognition | Help user to know the current consuming apparatus | |
| Sensors in | 1 ~ 8pcs same or different sensors connect in one PDU | Flexible sensor input, extend and choose, Customized for new sensors | Optional |
| Cascade chain | KWX-N with KWX-N Cascade | Directly connection via net cable; Via HUB 4 sets Cascade at most | |
| | KWX-N with KWX-S Cascade | Directly connection via net cable, 4 sets Cascade at most | |

KWX Model Numbers

Please specify series by character highlighted in **red** and your model type in **green**
eg: KWX-**N**16A10C3-H**3F**



KWX-**N/S**16A8C3-H**1/2/3/4F**



KWX-**N/S**16A10C3-**1/2/3/4**



KWX-**N/S**16A8Schuko-**1/2/3/4**



KWX-**N/S**16A12C3-**1/2/3/4**



KWX-**N/S**16A12C3C94-**1/2/3/4**



KWX-**N/S**16A20C3C94-**1/2/3/4**

Bespoke Requests Custom build options

With our UK manufacturing capability PDUeX can build to your specifications with our market leading 2 week turn round, including:

- ✓ Surge Protection and SMS SNMP Email Alarm
- ✓ Individually Fused Outlets
- ✓ Recoverable Overload protection
- ✓ Socket types & number
- ✓ 1u/2u Up to 72 outlets
- ✓ Modbus RS485

Please contact the PDUeX team for assistance:

Tel: **01823 662414**

or email: info@pduexpertuk.com

KWX PDU SENSORS



Infrared Sensor



Door Sensor



**Temperature/
Humidity Sensor**



Smoke Sensor



**Water Logging
Sensor**