

The most innovative PDU on the market



Intelligent, Rack Mounted, Outlets Fused Power Distribution Units

KWX N2 PDU

Total Power Monitoring & Outlet Metering PDU



PDUeX as standard where others don't!!

- ✓ Monitor Each Sockets Current
- ✓ Sequential power on
- ✓ User can define the sequence of order in which outlets will be switched on.
- ✓ Power Status Holding
- ✓ Monitor the Total Current
- ✓ Monitor the Input Voltage Monitor the total kWh
- ✓ Power Factor Recognition
- ✓ Monitors Input & Output Voltage
- ✓ Individually Fused Sockets
- ✓ 55°C Hot Rack Operating
- ✓ SMS, SNMP & Email Notification
- ✓ C13 IEC Locking as Standard
- ✓ Built in Environmental Monitoring
- ✓ Technology as Standard
- ✓ Up to 8 Sensors, Plug 'n' Play Sensors
- ✓ BADE Server Ready
- ✓ Dry Connector for Audible Alarms
- ✓ Intelligent Outlet Type & Number Recognition
- ✓ 24v and 48v, Single Phase 120v & 240v, 3 Phase 400v



KWX-N16A10C3-H2F

KWX-N2

Remote Monitored PDU

KWX Individually Outlets Fused, Per Outlets Power Metering PDU series is the new generation of Intelligent Fused PDU. It combines network power distribution and environmental monitoring technology; it provides real-time remote power consumption of total current load and voltage. KWX provides per outlet power monitoring. Power information of individual outlet includes current, voltage, apparent power and power factor.

Receive SNMP-based or email alerts when power or environmental surroundings go above the thresholds. Assign access rights to user groups or individuals. KWX Individually Outlets Fused MP products provide the necessary flexibility, with embedded multithreading inner core RTOS (Real Time Operating Systems), the software supports multitask and multiuser access. RTOS software supports also various TCP/IP protocols, including HTTP, HTTPS, SSL, SNMP, TELNET, SSH, SMTP etc.



Socket Types



Example of the reverse of KWX-N16A8C3

Dimension

19" Horizontal (W x D x H) 19" x 206.9mm x 44.4mm

Vertical mounted (L x W x D) A x 58mm x 44.4mm

A = length can be customized



KWX-N16A20C3-V2F

Items	Description	N1	N2	N3	N4	
Monitor Functions	LED Display	Current Load of total pdu and per ports	✓	✓	✓	✓
		LED flashes when overload	✓	✓	✓	✓
		PDU Address, Version Number	✓	✓	✓	✓
	Managing software/Hyper Terminal	Total Current Load	✓	✓	✓	✓
		Monitors Current Load Per Ports	✗	✓	✗	✓
		Input Voltage	✓	✓	✓	✓
		Max. Voltage configured	✓	✓	✓	✓
		Max. Current configured	✓	✓	✓	✓
		Sensors state (optional)	✓	✓	✓	✓
Control Functions	PC Control	On/off of individual unit	✗	✗	✓	✓
		Power On /Off time setting	✗	✗	✓	✓
		Stay the same after restart	✗	✗	✓	✓
Accessing Method	RS 485 port	✓	✓	✓	✓	
Daisy-chain ways	Serial and radiation connection	✓	✓	✓	✓	

KWX-N16A10C3-H2F

KWX Individually fused series can be accessed via LAN /WAN or over serial interface.

KWX-N16A10C3-H2F series provides a remote monitor PDU with embedded multithreading inner core RTOS (Real Time Operating Systems), that supports multitask and multiuser access. The software supports various TCP/IP protocols, including The software supports various TCP/IP protocols, including HTTP, HTTPS, SSL, SNMP, TELNET, SSH, SMTP etc

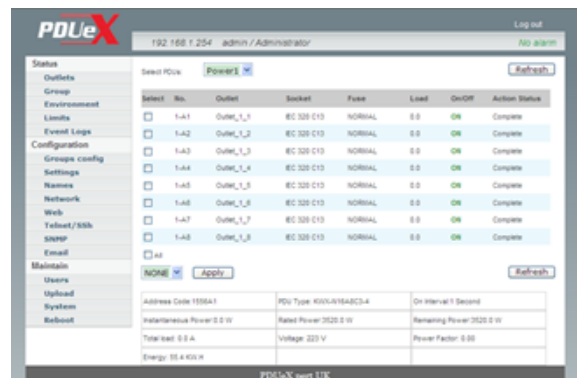
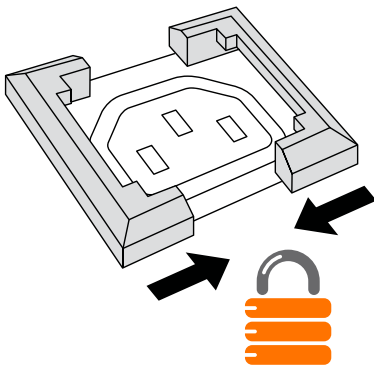
Provides: Sensors recognition, Ability to cascade up to 4units, Monitor the total current, Monitor the total kWh, and Monitor the input voltage

Alarm settings: Total current limit, Temperature limit, Total current over limit alarm, Humidity over limit alarm, Smoke Alarm, Water logging alarm, Infrared enter alarm, Door open alarm, dry connection.

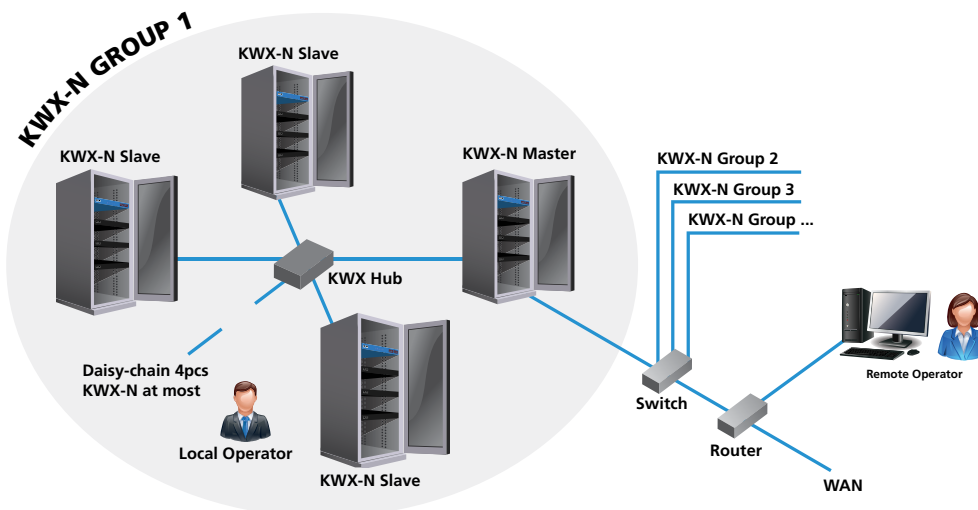
It offers: Total Power Monitoring and Individually Outlet Power Meterng, Power factor recognition, Monitor the input voltage, 10 x Individually fused outlets, 10 x lockable IEC C13.

Optional: Temperature and humidity, Smoke alarm, Water logging alarm, Infrared alarm, Door open alarm.

T



Radiation Connection



KWX-N16A10C3-H2F

Part number	KWX-N16A10C3-H2F
Product series	KWX-N series 2
Product Size	W x D x H = 19" x 206.9 mm x 44.45 mm
Mounting length	465 mm

Case color	Black
Net Weight	3KG
Socket type Output	10 x Lockable IEC-C13
Socket Power Input	IEC-320 C20 16A

Function	Illustration	Parameter	Note
Working voltage	Normal working	AC90~250V	
Input/output current	Max input/output current	16A 10A	
Working band	Under normal working	47~60Hz	
Access	Net port	Via WAN or LAN monitor access	10/100Mb Adaptive Networking
	Serial port	Via Serial port monitor access	RS485 port
	Sensor port	Sensors access	RS485 port
Access way	HTTP/HTTPS	Web browser access	Adapt IE Fire fox inner core browser, support SSL;
	TELNET	Simple command lines access	/
	SSH	Encryption command lines access	Support SSHV2 version
	SNMP	Support SNMP for centralized monitor	Adapt SNMP v1, V2
Operation system compatibility	Support various operation system	Windows/winsta/win7/linux etc.	
Secondary development	Used for system integrate	Opening protocol TELNET SSH	
	RS485	Customized protocol	
Software upgrade	Manage software load	Support manage software upgrade	
	Software on circuit	Support software upgrade on the circuit of hardware	
Alarm limit settings	Total current limit		
	Temperature limit	Auto identify limit rationality	
	Humidity limit		
Display, Indicate	Outlets indicators	Each outlets with a indicator	Optional
	6 digital indicators	Nixie tube show the current/voltage, inquiry products information, Alarm information;	
Menu button operation	Inquiry information	Inquiry product information, Alarm information, current etc.	
	On/off Alarm sound, Dry connect	Close/ open alarm sound and dry connect output, Dry connect have normal open/off two choice, passive, touch spot can connect 2A 250VAC	
Management	User right limit	Administrator, Normal user	
	Outlets grouping	Make group over PDU self sockets limit	
	clock synchronization	Regulate PDU system clock	
Log record	Alarm log	Alarm log circle, Inquiry, export, stock, delete available	

Control	Control each outlets on/off	Each outlet breaking capacity 16A 250VAC	Optional
	Sequential power on/off	The interval of sequential power off time: 0.5s, Sequential power on 1~250s, user-defined	
	Power status holding	When PDU restart power, Each outlets will remain the status before	
Monitor	Manage software load	Support manage software upgrade	
	Monitor the input voltage	Resolution:1V Accuracy: $\pm 1\%+1$ digit Meter range: 90~350V	
	Monitor the total current	Resolution: 0.1A Accuracy: $\pm 1\%+1$ digit Meter range: 0.1~40A	
	Monitor the total kWh	Resolution: 0.1KW-H Accuracy: 1 grade	
	Monitor Environment Temperature	Resolution: 1 Accuracy: $\pm 1\%+1$ digit Meter range: -30~100	Optional
	Monitor Environment Humidity	Resolution: 1% Accuracy: $\pm 1\%+1$ digit Meter range: 01~99%	Optional
	Monitor Environment Smoke	Max: 25 m ² available	Optional
	Monitor water logging	Water logging or drop monitor	Optional
	Infrared monitoring	The max monitor distance: 16m	Optional
	Door open monitor	Min. 5mm open distance available	Optional
	Surge protection failure monitor	PDU still normal working when failure	Optional
Outlets alarm settings	Each fuse failure alarm		Optional
	Total current over limit alarm	PS/PN series local alarm ways: PDU buzzer alarm, sound and light alarm, Dry connect; PN series remote alarm: E-mail, SMS, SNMP TRAP, WEB page notice, TELNET/SSH notice	
	Temperature over limit alarm		Optional
	Humidity over limit alarm		Optional
	Smoke Alarm		Optional
	Water logging alarm		Optional
	Infrared enter alarm		Optional
	Door open alarm	KWX-N series remote alarm: E-mail, SMS, SNMP TRAP, WEB page notice,	Optional
Surge protection failure alarm	Optional		
Protection	Surge protection	Difference mode: $\pm 2kV$ Common mode $\pm 2kV$ flux: 3KA The max discharge current: 5KA	Optional
	Each way with fuse	Breaking capacity : 1500A; Protect main line break, facility, power line suffering, Fuse range: 0.1~16A	Optional
	Circuit Breaker protection	Breaking capacity : 6000A	Optional
	Recoverable overload protector	Overload protection	Optional
Intelligent recognition	Outlets recognition	Automatic read the sockets type and numbers	
	Sensors recognition	Sensors port no need be defined, Automatic read the sensors type and numbers	
	Limit recognition	When over limit, setting failure	
	The MAX output current and PDU power	Help user to limit facilities connect number and type	
	Power factor recognition	Help user to know the current consuming apparatus	
Sensors in	1 ~ 8pcs same or different sensors connect in one PDU	Flexible sensor input, extend and choose, Customized for new sensors	Optional
Cascade chain	KWX-N with KWX-N Cascade	Directly connection via net cable; Via HUB 4 sets Cascade at most	
	KWX-N with KWX-S Cascade	Directly connection via net cable, 4 sets Cascade at most	

KWX Model Numbers

Please specify series by character highlighted in **red** and your model type in **green**
eg: KWX-**N**16A10C3-H**2F**



KWX-**N/S**16A8C3-H**1/2/3/4F**



KWX-**N/S**16A10C3-**1/2/3/4**



KWX-**N/S**16A8Schuko-**1/2/3/4**



KWX-**N/S**16A12C3-**1/2/3/4**



KWX-**N/S**16A12C3C94-**1/2/3/4**



KWX-**N/S**16A20C3C94-**1/2/3/4**

Bespoke Requests Custom build options

With our UK manufacturing capability PDUeX can build to your specifications with our market leading 2 week turn round, including:

- ✓ Surge Protection and SMS SNMP Email Alarm
- ✓ Individually Fused Outlets
- ✓ Recoverable Overload protection
- ✓ Socket types & number
- ✓ 1u/2u Up to 72 outlets
- ✓ Modbus RS485

Please contact the PDUeX team for assistance:

Tel: **01823 662414**

or email: info@pduexpertuk.com

KWX PDU SENSORS



Infrared Sensor



Door Sensor



**Temperature/
Humidity Sensor**



Smoke Sensor



**Water Logging
Sensor**