

*The most innovative ATS on the market*



**Intelligent, Rack Mounted,  
Automatic Transfer Switch**

## KWX-ATS1

KWX-ATS16A8x2-H1C20

Remote Monitored ATS



- ✓ Monitor The Total Current
- ✓ Monitor The Input Voltage
- ✓ Monitor The Total kWh
- ✓ Power Factor Recognition
- ✓ Monitors Input & Output Voltage
- ✓ 55°C Hot Rack Operating
- ✓ SMS, SNMP & Email Notification
- ✓ 8 x Lockable IEC C13 & 2 x IEC C19
- ✓ Built In Environmental Monitoring Technology As Standard
- ✓ Infrared Monitoring
- ✓ Temperature & Humidity Alarm
- ✓ Water Logging Alarm
- ✓ Rack Door Monitor Alarm
- ✓ Smoke Alarm
- ✓ Up to 8 Plug ' n ' Play Sensors
- ✓ Blade Server Ready
- ✓ Dry Connector for Audible Alarm
- ✓ Intelligent Outlets Type & Number
- ✓ 1, 4, 8, 10 Horizontal, 16A and 32A



## KWX-ATS

### Remote Monitored Automatic Transfer Switch

KWX-ATS16A8x2-H1C20 Rack mount Automatic Transfer Switch, is a new generation of Intelligent Automatic Transfer Switch. It combines network power distribution and environmental monitoring technology. It delivers consistent power, to single-corded equipment, KWX-ATS-16A8x2-H1C20 has a dual input power cords supplying power to the connect load. In the event where the primary power source becomes unavailable, the KWX-ATS16A8x2-H1C20 will flawlessly source power from the secondary source without interrupting critical loads. This high speed transfer rate ensures that the transfer is transparent to the sensitive equipment. KWX-ATS16A8x2-H1C20, provides remote power consumption of total current load and voltage. Receive SNMP-based or email alerts when power or environmental surroundings go above the thresholds. Assign access rights to user groups or individuals.

#### Socket Types



Reverse view of KWX-ATS16A8x2-H1C20

#### Dimension

**19 " Horizontal (W x D x H) = 19" x 206.9 x 44.45 mm**



Items		Description	N1	N2	N3	N4
Monitor Functions	LED Display	Current Load of total pdu and per ports	✓	✓	✓	✓
		LED flashes when overload	✓	✓	✓	✓
		PDU Address, Version Number	✓	✓	✓	✓
	Managing software/Hyper Terminal	Total Current Load	✓	✓	✓	✓
		Monitors Current Load Per Ports	✗	✓	✗	✓
		Input Voltage	✓	✓	✓	✓
		Max. Voltage configured	✓	✓	✓	✓
		Max. Current configured	✓	✓	✓	✓
		Sensors state (optional)	✓	✓	✓	✓
Control Functions	PC Control	On/off of individual unit	✗	✗	✓	✓
		Power On /Off time setting	✗	✗	✓	✓
		Stay the same after restart	✗	✗	✓	✓
Accessing Method		RS 485 port	✓	✓	✓	✓
Daisy-chain ways		Serial and radiation connection	✓	✓	✓	✓

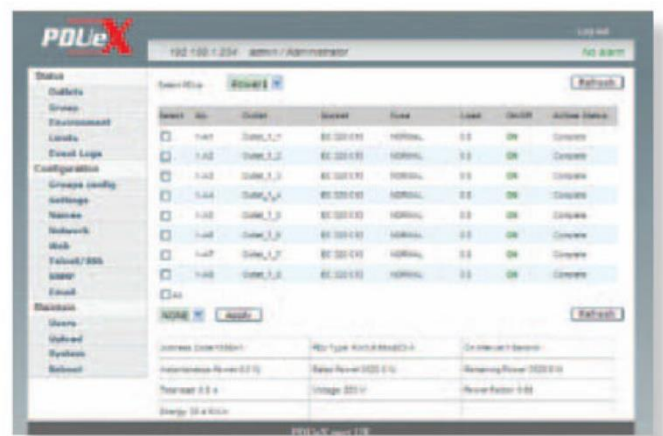
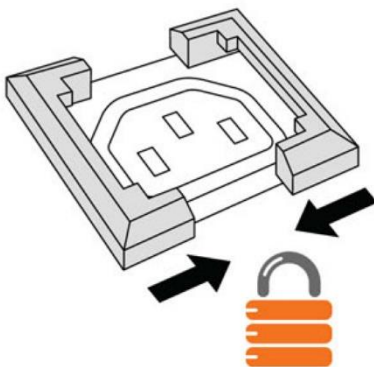
## KWX-ATS16A8X2-H1C20

KWX-ATS-16A8x2-H1C20 provides 8 x lockable IEC-C13 and 2 x C19. Provides Total Power Monitoring and the necessary flexibility. With embedded multithreading inner core RTOS (Real Time Operating Systems), the software supports multitask and multiuser access. RTOS software also supports various TCP/IP protocols, including HTTP, HTTPS, SSL, SNMP, TELNET, SSH, SMTP etc

**Optional:** Temperature and humidity smoke alarm Water logging alarm, infrared alarm, and door alarm.

**Monitor:** Monitor the total current, monitor the total kWh, monitor the input voltage, monitor environment Temperature, monitor environment humidity monitor environment smoke. Monitor water logging, infrared monitoring, and door open monitoring.

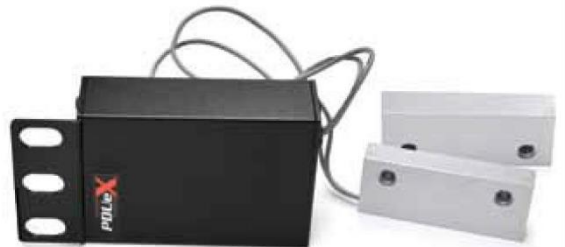
**Alarm settings:** Total current over the limit, on the temperature limit, on the humidity limit, smoke alarm and water logging alarm, infrared enters alarm, door open alarm, dry connection



## KWX PDU SENSORS



**Infrared Sensor**



**Door Sensor**



**Temperature/  
Humidity Sensor**



**Water Logging  
Sensor**



**Smoke Sensor**